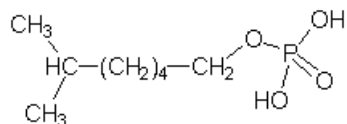
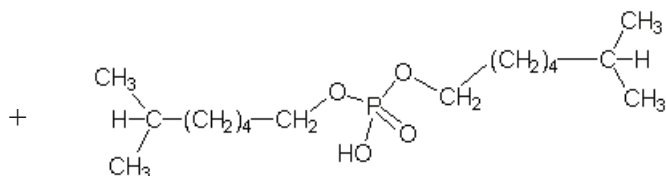


Sales Specification

Isooctyl Acid Phosphate



monoisooctyl acid phosphate



diisooctyl acid phosphate

Isooctyl Acid Phosphate contains a mixture of mono and di-ester isooctyl acid phosphate.

<u>Test</u>	<u>Specifications</u>
Acid Number, mg KOH/g	280 - 330
Color, APHA	500 Max.
Mono ester, wt %	32 - 41
Diester, wt%	55 - 67
Phosphorus, wt%	11.2 - 11.9

Typical Properties

Turbidity, NTU	50 Max.
IR	Matches standard

IOAP-01 07/09