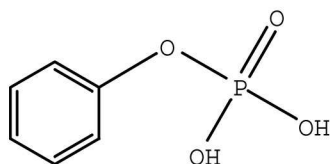


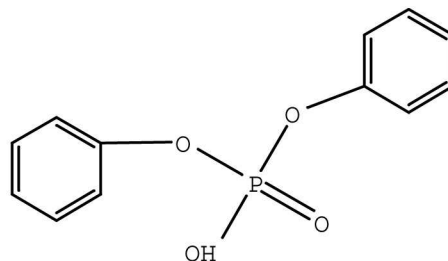
## Sales Specification

### Phenyl Acid Phosphate



monophenyl acid phosphate

+



diphenyl acid phosphate

Phenyl Acid Phosphate contains 75% of an approximate equimolar mixture of monophenyl acid phosphate and diphenyl acid phosphate in n-butanol.

#### Test

Acid Number, mg KOH/g  
Color, APHA  
Mono ester, wt %  
Diester, wt%

#### Specifications

275 - 325  
100 Max.  
24.0 Min.  
50.0 Max.

#### Physical Properties

Appearance  
Density @ 25°C

Clear Liquid  
9.5 lbs/gal